



CENTAURI

TRANSPORT



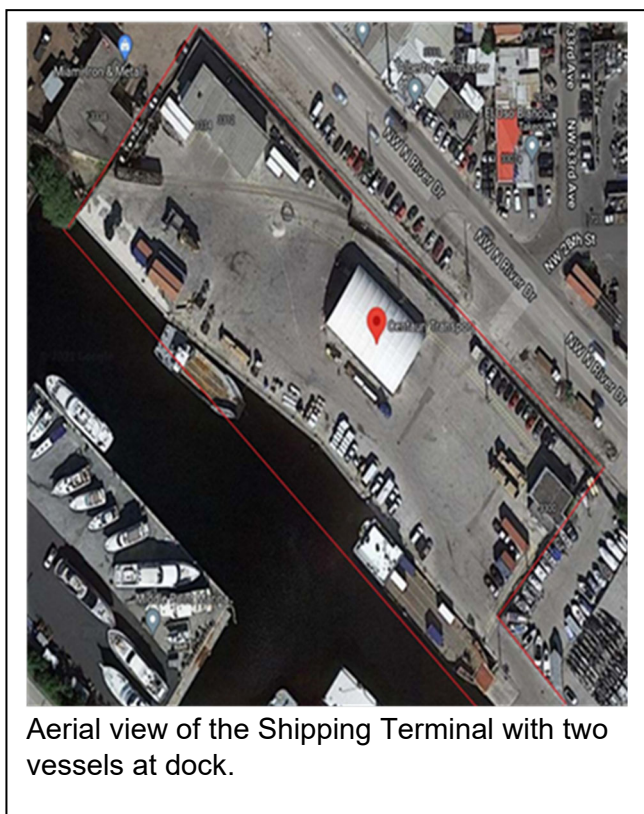
Background

Centauri Transport is an Ocean Shipping & Logistics Company with offices in the Bahamas and shipping terminal based in Miami on the Miami River. The Company was formed in August of 2019 and officially began operations in January of 2020. The objective of the Company is to provide reliable shipping services and quality customer services primarily to the Family Islands of the Bahamas.

The ocean shipping service is the primary means of transporting goods from the US to the Bahamas' Family Islands. Unfortunately, the Family Islands have been underserved by unreliable shipping lines which have left the stakeholders of the Family Islands with little to no good solutions. Dependent almost exclusively on the supply of food, vehicles, clothing, household goods, building materials and other products from the US, those live or do business in the Family Islands have come to expect late arrivals, ranging from days to weeks as a common and uncontrollable reality. Demand being poorly served, tourism growth in the Family Islands and the redevelopment of Abaco, following hurricane Dorian is further exacerbated by poor shipping service. Centauri Transport was founded in large part due to this underserved demand but also the forecast for significant growth in the Family Islands.

Our US Base of Operations

Centauri Transport is based in Miami, Florida, operating a 3.5 acre shipping terminal, located on the Miami River. Our facility is Customs bonded and US Coast Guard certified, with full time, bonded security service, providing 24/7 access and control. All personnel are based on site, overseeing all aspects of the Company's services. With 600 linear foot of dock space, two warehouses providing 11,400 SF of controlled storage, additional acreage providing laydown yard capacity and owned shipping equipment to include dry and refrigerated containers, flat racks and chassis. All vessel operations, cargo receiving and handling, documentation and warehousing, and vessel stevedoring are performed on the Company controlled, single site.



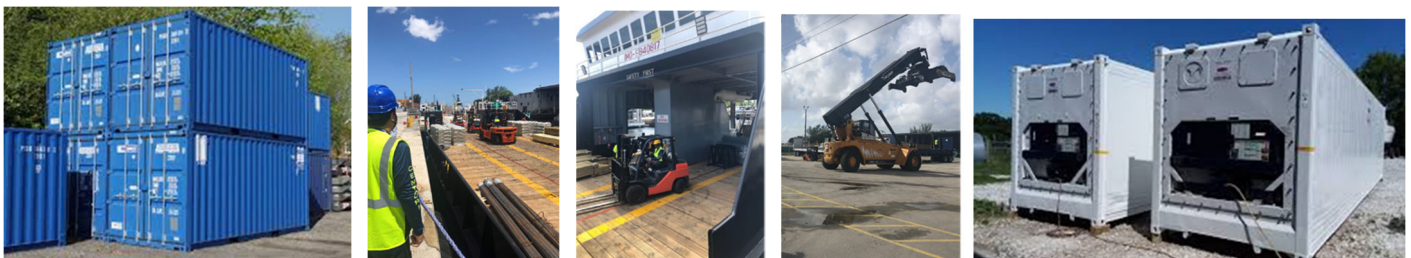
Centauri Transport Bahamas, LTD

To assure our operations between the US and the Bahamas are fully qualified and meet with regulatory requirements, Centauri Transport Bahamas, LTD was founded in April 2020. Centauri Transport Bahamas, LTD provides for all local regulatory affairs, banking, bond requirements and station personnel throughout the islands.

Current Markets & Services Provided

Centauri Transport provides scheduled service to multiple ports in Abaco, Eleuthera and Exuma and continues to pursue new scheduled service to Andros, Bimini, the Berry Islands as well as Long Island, Mayaguana and Great Inagua.

- 1) Reliable weekly scheduled service from Miami to Abaco
 - Direct service to Marsh Harbour, Great Guana Cay/Baker's Bay, and Cooperstown
 - Barge transfer service from Marsh Harbour to Elbow Cay
- 2) Reliable weekly scheduled service from Miami to Eleuthera
 - Direct service to Harbour Island, Spanish Wells, Three Island Dock (N. Eleuthera), Governor's Harbour and Rock Sound
- 3) Reliable weekly scheduled service to George Town, Exuma
- 4) Full Vessel Charters as required, whether one off or project based
- 5) Partial Vessel Charters in coordination with scheduled sailings
- 6) Terminal capabilities
 - Warehouse capacity for storage & consolidation
 - Refrigerated Storage, both frozen and chilled
 - Receiving, warehousing, documentation and cargo clearance capabilities all performed by Centauri Transport personnel
- 7) Local and US inland transportation services
 - Trucking, drayage – full container, box truck and local pickup and delivery
- 8) All Shipping Equipment, which includes 20' and 40' dry containers, refrigerated containers, flat racks and chassis are owned and controlled by Centauri Transport, assuring a true turnkey solution to our clients.



Centauri Transport's Cargo Vessels

Costa V (C5)

A newly built Landing Craft, the launch vessel operated by Centauri Transport. Delivered in June of 2020.

- 190' length and beam of 38'.
- Tonnage capacity of 500-Tons and the equivalent of 26, Twenty Foot Ocean Containers (TEUs).
- Operating speed up to 11 knots, consuming an average of 40 US Gallons (diesel) per hour.
- Powered by 2 Mitsubishi engines, each with 850 HP, operating at 1,400 RPMs.
- Providing additional control, the vessel is equipped with a Cummings powered bow thruster (250 HP, 160 KW generator).
- Equipped with a full kitchen (and cook) and sleeping accommodations for 9 crew members.

Costa VI (C6)

A newly built Landing Craft, Delivered in December 2021.

- 160' length and beam of 36'.
- Tonnage capacity of 500 Tons and the equivalent of 21, Twenty Foot Ocean Containers (TEUs).
- Operating speed up to 11 knots, consuming an average of 40 US Gallons (diesel) per hour.
- Powered by 2 Cummins engines, each with 660 HP, operating at 1,800 RPMs.
- Providing additional control, the vessel is equipped with a Cummins powered bow thruster (250 HP, 160 KW generator).
- Equipped with a full kitchen (and cook) and sleeping accommodations for 9 crew members.



Bahamas Pearl

Built in 2005 – Currently in Roatan, Honduras for maintenance and preparation for delivery to Centauri Transport, projected to arrive for US Coast Guard inspection late June 2022.

- Vessel Length is 190' with a beam of 45'
- Tonnage capacity of 1,000-Tons and the equivalent of 26 Twenty Foot Ocean Containers (TEUs).
- Projected to operate at a speed up to 8 knots, consuming an average of 50 US Gallons (diesel) per hour.
- Powered by two, Cummins engines, 639 HP each (Combined 1,278 HP).
- The vessel will have a full kitchen (and cook) and sleeping accommodations for 9 crew members.





Thank you for considering Centauri Transport as your shipping partner!

Points of Contact

Frank J. Visconti, CEO

T 305-753-6101

E FVisconti@CTOcean.com

Lynn M. Christ, Sr. Director of Sales

T 786-202-1192

E LChrist@ctocean.com